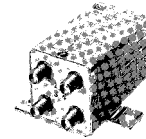


Type C Transfer Coaxial Switch



This RLC Electronics' Type C mid-size Transfer Switch line provides extremely high reliability, long life and outstanding electrical performance features extremely low insertion loss

and VSWR over the entire DC-18 GHz range, with option to 40 GHz, while maintaining high isolation.

Specifications

S¹-TC-2-3-4-5-6-7

Switch Type:	TRANSFER			
Frequency Range:	DC-18 GHz	(Opt. 26)	DC-40 GHz (Opt. 40)	
Insertion Loss (Max dB)			Ins. Loss: (dB Max)	
DC-4.0 GHz	0.20	0.20	DC-6.0 GHz	0.25
4.0-12.4 GHz	0.30	0.30	6.0-12 GHz	0.40
12.4-18 GHz	0.40	0.40	12-18.5 GHz	0.50
18-26.5 GHz (option 26)	-	0.70	18.5-26.5 GHz	0.70
			26.5-40 GHz	0.90
VSWR (Max)			VSWR: (Max)	
DC-4 GHz	1.20	1.20	DC-6.0 GHz	1.30
4.0-12.4 GHz	1.30	1.30	6.0-12 GHz	1.40
12.4-18 GHz	1.50	1.50	12-18.5 GHz	1.50
18-26.5 GHz (option)	-	1.80	18.5-26.5 GHz	1.70
			26.5-40 GHz	2.00
Isolation (dB Min)			Insolation: (dB Min)	
DC-4 GHz	80	80	DC-6.0 GHz	70
4.0-12.4 GHz	70	70	6.0-12 GHz	60
12.4-18 GHz	60	60	12-18.5 GHz	60
18-26.5 GHz (option)	-	40	18.5-26.5 GHz	55
			26.5-40 GHz	45

Power Rating, RF Cold Switching: See page 5.

Impedance: 50 Ohms

Operating Power 25°C:

(Failsafe): 12Vdc at 500 ma nom.

28Vdc at 200 ma nom. 115 Vac at 40 ma nom.

(Latching) 12 Vdc at 500 ma nom.

28 Vdc at 300 ma nom. 115 Vac at 225 ma nom. Current

applied Cutthroat circuitry(standard), recovery time 100ms nom.

Connectors, RF: SMA, TNC*, BNC* (40 GHz 2.92 mm)

Connectors, Power: Feed through solder lugs.

Life: 1,000,000 operations.

Switching Time: 20 mS Max.

Weight: 6oz.

Environmental Conditions: MIL-S-3928

Operating Mode: Manual, failsafe or latching.

Switching Sequence: Break before make.

*BNC not recommended above 1GHz

*TNC not recommended above 12.4GHz

To designate the switch desired use:

(1) "M" for Manual, "R" for Remote.

(2) "B" for BNC, "T" for TNC, "R" for SMA type connectors

(3) "A" for 115 Vac, "D" for 28 Vdc or "H" for 12 Vdc.

(4) "I" for indicators if desired.

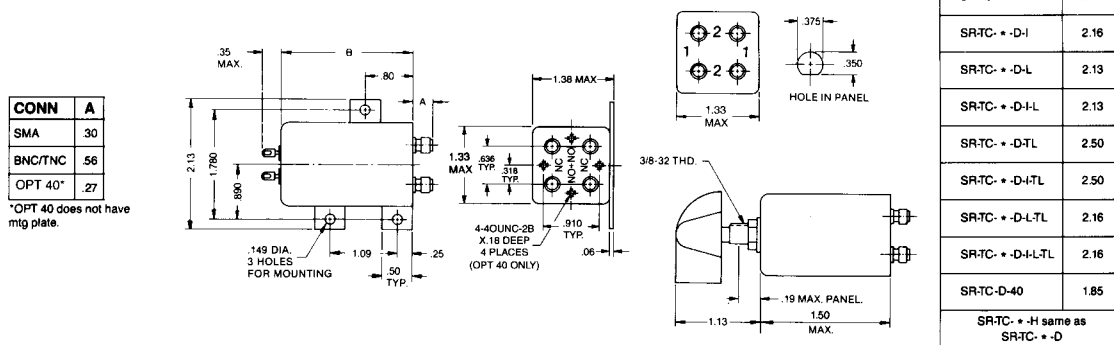
(5) "L" for latching cutthroat if desired

(6) "TL" for TTL Driver if desired

(7) "26" for 26.5GHz option "40" for 40 GHz option

Example: SR-TC-T-D-I-L is a remote, TNC, 28 Vdc; with indicators, latching cutthroat switch

Outline Drawing



RLC ELECTRONICS, INC.

83 Radio Circle, Mount Kisco, New York 10549 • Telephone: 914-241-1334 • Fax: 914-241-1753
e-mail: sales@rlcelectronics.com • www.rlcelectronics.com