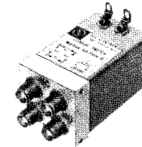


# Miniature Transfer Coaxial Switches



This RLC Electronics' Miniature Transfer Switch line provides extremely high reliability, long life and outstanding electrical performance and features extremely low insertion loss

and VSWR over the entire DC-18 GHz range, with an option to 26.5 GHz, while maintaining high isolation.

## Specifications

S<sup>1</sup>-TMIN<sup>2-3-4-5-6</sup>

Switch Type	TRANSFER			
Frequency Range	DC-18GHz			OPTION
Frequency (GHz)	DC-4.0	4.0-12.4	12.4-18.0	18 - 26.5
Insertion Loss (Max dB)	0.1	0.2	0.3	1.0
VSWR (Max)	1.2	1.3	1.5	2.0
Isolation (dB Min)	80	70	60	45

**Power Rating, RF Cold Switching:** See page 5.

**Impedance:** 50 Ohms

**Operating Power 25°C:**

**(Fail-safe):** 12Vdc at 650 ma nom.

28Vdc at 266 ma nom. 115 Vac at 50 ma nom.

**(Latching):** 12 Vdc at 180 ma nom. 28 Vdc at 90 ma nom.

115 Vac at 225 ma nom. Current applied 10 ms min.

cutthroat circuitry(standard), recovery time 100 ms nom.

**Connectors, RF:** SMA Female

**Connectors, Power:** Feed through solder lugs.

**Life:** 1,000,000 operations.

**Switching Time:** 15 mS Max.

**Weight:** 3 oz.

**Environmental Conditions:** MIL-S-3928

**Operating Mode:** Manual, failsafe or latching.

**Switching Sequence:** Break before make.

**To designate the switch desired use:**

(1) "M" for Manual, "R" for Remote.

(2) "A" for 115 Vac, "D" for 28 Vdc or "H" for 12 Vdc.

(3) "I" for indicators if desired.

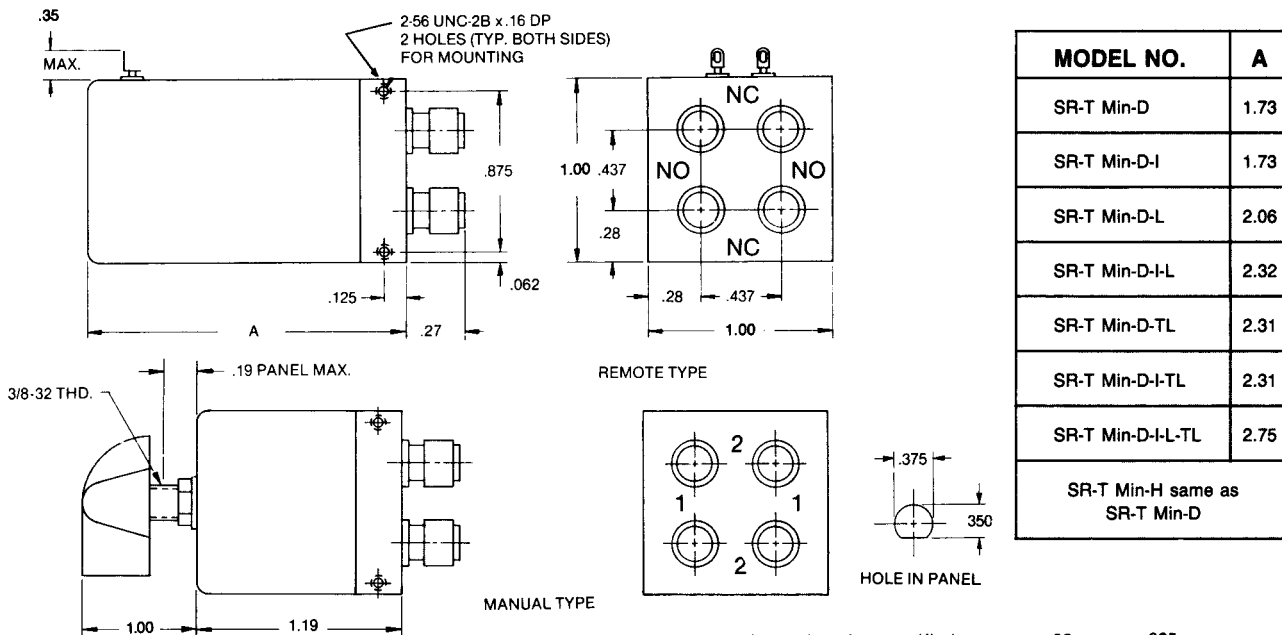
(4) "L" for latching cutthroat if desired

(5) "TL" for TTL Driver if desired

(6) "26" for 26.5 GHz operation

Example: SR-Tmin-D-I-L-26 is a remote, 28 Vdc; with indicators, latching cut throat switch. 26.5GHz operation.

## Outline Drawing



Tolerances unless otherwise specified are: .xx, ± .02; .xxx, ± .005.

