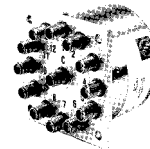


# Type C Multi-Position Coaxial Switches (7 to 12 Position)



This RLC Electronics' Mid-Size, Extended Multi-Position Coaxial Switch line provides up to 12 positions with extremely high reliability, long life and outstanding electrical performance

featuring extremely low insertion loss and VSWR over the entire DC-18GHz range, while maintaining high isolation.

## Specifications

S<sup>1-2</sup> C<sup>-3-4-5-6</sup>

RF Positions	7	8	9	10	11	12
Switch Type:	SP-7T	SP-8T	SP-9T	SP-10T	SP-11T	SP-12T
Frequency Range:(GHz)	DC-18	DC-18	DC-18	DC-18	DC-18	DC-18
Insertion Loss (Max dB)						
DC-6 GHz	0.30	0.30	0.30	0.30	0.30	0.30
6.0-12.0 GHz	0.50	0.50	0.50	0.50	0.50	0.50
12.0-16.0 GHz	0.70	0.70	0.70	0.70	0.70	0.70
16.0-18.0 GHz	1.00	1.00	1.00	1.00	1.00	1.00
VSWR (Max)						
DC-6 GHz	1.40	1.40	1.40	1.40	1.40	1.40
6.0-12.0 GHz	1.50	1.50	1.50	1.50	1.50	1.50
12.0-16.0 GHz	1.70	1.70	1.70	1.70	1.70	1.70
16.0-18.0 GHz	1.80	1.80	1.80	1.80	1.80	1.80
Isolation (dB) (Min) DC-12 GHz						
12-18 GHz	60	60	60	60	50	50

**Power Rating, RF Cold Switching:** See page 5.

**Impedance:** 50 Ohms

**Operating Power 25°C:**

(Failsafe): 12Vdc at 333 ma nom.

28Vdc at 150 ma nom.

**Connectors, RF:** SMA Female

**Connectors, Power:** Solder Connections.

**Life:** 1,000,000 operations.

**Switching Time:** 15 mS Max.

**Weight:** 10oz.

**Environmental Conditions:** MIL-S-3928

**Operating Mode:** Manual or failsafe

**Switching Sequence:** Break before make.

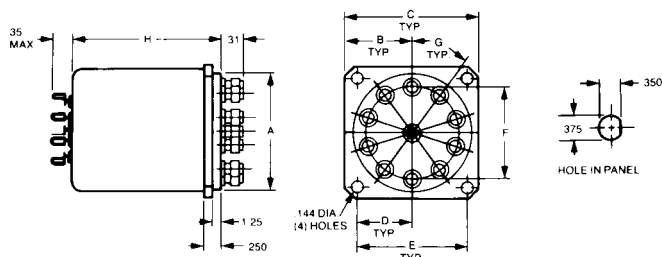
### To designate the switch desired use:

- (1) "M" for Manual, "R" for Remote.
- (2) "7C", "8C", "9C", "10C", "11C" or "12C" throw operation
- (3) "D" for 28 Vdc or "H" for 12 Vdc.
- (4) "I" for indicators if desired.
- (5) "TL" for TTL Driver if desired

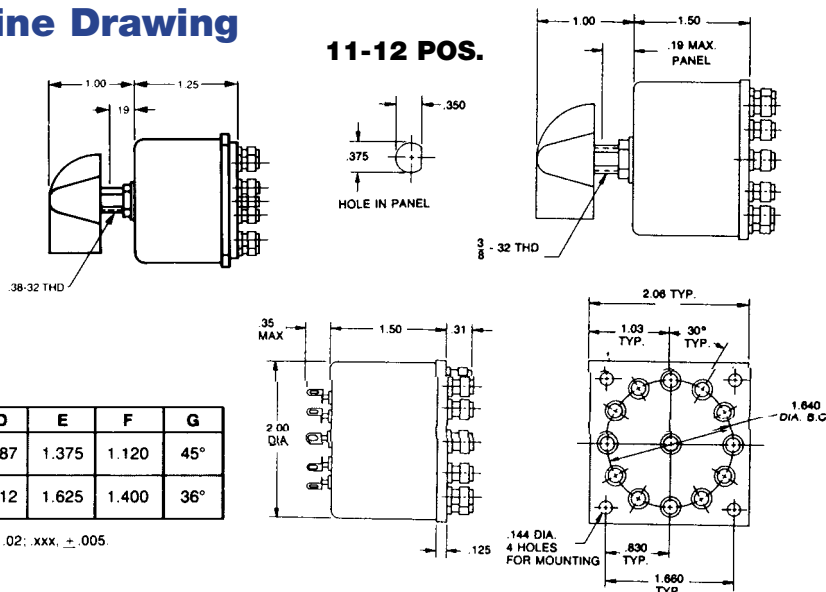
Example: SR-10C-D-I is a remote, 10 position, 28 Vdc; with indicators, switch

## Outline Drawing

### 7-10 POS.



### 11-12 POS.



MODEL NO.	H
SR- C-D	2.63
SR- C-D-I	3.63
SR- C-D-TL	3.00
SR- C-D-I-TL	4.00

MODEL NO.	A	B	C	D	E	F	G
SR-7C-D	1.558	.875	1.750	.687	1.375	1.120	45°
SR-8C-D							
SR-9C-D	1.800	1.000	2.000	.812	1.625	1.400	36°
SR-10C-D							

Tolerances unless otherwise specified are: .xx, ± .02; .xxx, ± .005.



## RLC ELECTRONICS, INC.

83 Radio Circle, Mount Kisco, New York 10549 • Telephone: 914-241-1334 • Fax: 914-241-1753  
e-mail: sales@rlcelectronics.com • www.rlcelectronics.com