

DC-40 GHz Terminated Multi-Position Coaxial Switches (3 to 6 Position)



RLC Electronics' Terminated Multi-Position Coaxial Switch line provides proven reliability, long life and outstanding electrical performance.

This switch features extremely low insertion loss and VSWR over the entire DC-40 GHz range, while maintaining high isolation.

Specifications

STR-1-2-3-4-5-6

SWITCH TYPE	SP-3T thru SP-6T				
Frequency Range	DC-40 GHz				
Frequency (GHz)	DC-4.0	4.0-12.4	12.4-18	18-26.5	26.5-40.0
Insertion Loss (dB Max.)	0.2	0.4	0.5	0.75	0.9
VSWR (Max.)	1.25	1.4	1.5	1.7	2.0
Isolation (dB Min.)	60	60	60	55	50

Power Rating RF Cold Switching: 2 watts average

Impedance: 50 ohms

Operating Power 25 C:

(Failsafe): 12Vdc at 600ma nom.

28Vdc at 260ma nom.

(Latching): 12Vdc at 480ma nom. 28Vdc at 240ma nom.

Cutthroat circuitry (standard), recovery time 100ms nom.

Connectors, RF: 2.92mm female

Life: 1,000,000 operations

Switching Time: 25 ms Max. failsafe 125 ms latching

Weight: 20 oz.

Environmental Conditions: MIL-S-3928

Operating Mode: Failsafe or Latching

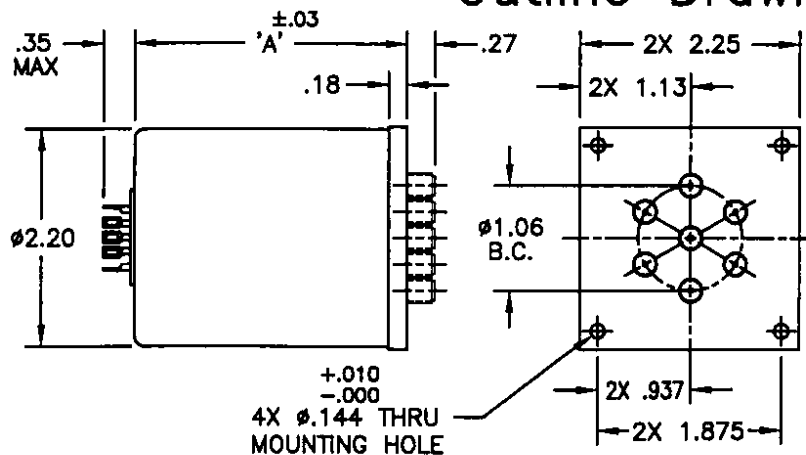
Switching Sequence: Break before make

To designate the switch desired use:

(1)	"3", "4", "5" or "6" throw operation	(4)	"L" for Latching cutthroat if desired
(2)	"D" for 28 Vdc or "H" for 12 Vdc	(5)	"TL" for TTL Driver if desired
(3)	"I" for indicators if desired.	(6)	"40" for 40GHz option

Example: STR-3-D-40 is a SP-3T, 28 Vdc, without indicators, failsafe switch that operates at DC to 40GHz.

Outline Drawing



3 TO 6 POSITIONS

MODEL NO.	'A'
STR-*-D	2.69
STR-*-D-I	3.30
STR-*-D-L	3.93
STR-*-D-I-L	3.93
STR-*-D-TL	3.33
STR-*-D-I-TL	3.65
STR-*-D-I-L-TL	4.15
STR-**-H same as STR-**-D	

Specifications subject to change without notification.

Tolerances unless otherwise specified are: .xx ±.02, .xxx ±.005

Specials requiring closer tolerances, different frequency ranges, special connectors different materials, finishes, etc. can be furnished upon request.



RLC ELECTRONICS, INC.

83 Radio Circle, Mount Kisco, New York 10549 Telephone 914-241-1334 Fax 914-241-1753

e-mail: sales@rlcelectronics.com www.rlcelectronics.com